



Health and Safety & Welfare and Environment

London Office and Warehouse



How to raise the fire alarm



Break glass on the red alarm point



If you are unable to get to an alarm point, shout “FIRE” 3 times



If safe to do so, inform security/facilities/senior manager of the location of the fire



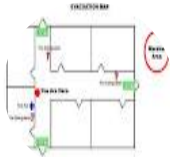
Fire Evacuation



Fire alarm test every Friday between 10:30 and 11:00



Wheelchair users should be assisted to the nearest landing, the fire warden/facilities/fire brigade should be notified



Familiarise yourself with the Fire Exits



Leave your personal possessions and make your way to the nearest assembly point



Leave via the nearest fire exit



The building manager will liaise with the fire brigade



Do NOT use the lifts



Your manager will inform you when it is safe to return to the building



Stay Calm, WALK don't run



It is your responsibility to ensure your visitors evacuate safely



Extinguishers in this building



CO2 (Carbon Dioxide)

To be used on live electrical equipment



Foam

Has been designed for general office use, but not to be used on electrical fires



Water

To be used on wood and paper

This is a refresher for employees who have been trained to use fire extinguishers. If there is a **SMALL** fire, you have a **SAFE EXIT**, and you feel confident in doing so, you can use an extinguisher to put out the fire.



How not to use the extinguishers



This is a refresher for employees who have been trained to use fire extinguishers



How TO use the extinguishers



This is a refresher for employees who have been trained to use fire extinguishers



Fire doors and exits

- Fire doors will withstand fire for at least 30 minutes
- Fire doors must never be wedged open for any reason
- You must leave via your NEAREST fire exit
- Fire exits must be clear at all times, this includes inside and outside of the building
- If you see a blocked fire exit, report it immediately.





Assembly Point / Fire Exits - Main Office

The fire exits in the main office:

There are two fire exits in the building:

- 1. Main Door** – exit via the stairs, do not use the lift during fire evacuation
- 2. Fire Escape** – towards the back of the building (by suite four)



The assembly point is:

In the courtyard outside **Yamal Alsham** restaurant.

Turn right if you exit from the front of the building and left (then right) if you exit from the back.





Assembly Point / Fire Exits - Warehouse

The fire exits in the warehouse:

Both Unit 29 and Unit 30 have two fire exits:

1. Exit onto Imperial Road
2. Exit into the Talina Centre car park



The assembly point is:

The car park outside Unit 29 (for both Unit 29 and Unit 30)





Health and Safety Policy

You have a responsibility to:

1. **Prevent accidents occurring and report potential hazards to your immediate manager or supervisor.**
2. **Work safely, tidily and in conformity with already established workplace rules and conditions.**
3. **Avoid misuse of any equipment at work.**
4. **Report any defects in equipment immediately to the appropriate manager or supervisor.**





Health and Safety

DO

- Report all injuries and obtain first aid immediately in the case of an accident
- Co-operate in keeping welfare facilities, kitchen and toilets clean and tidy
- Report all dangerous situations to your supervisor
- Ensure that you have relevant health & safety information for any circumstance
- Obey any safety signs
- Report any concerns to your supervisor



DON'T

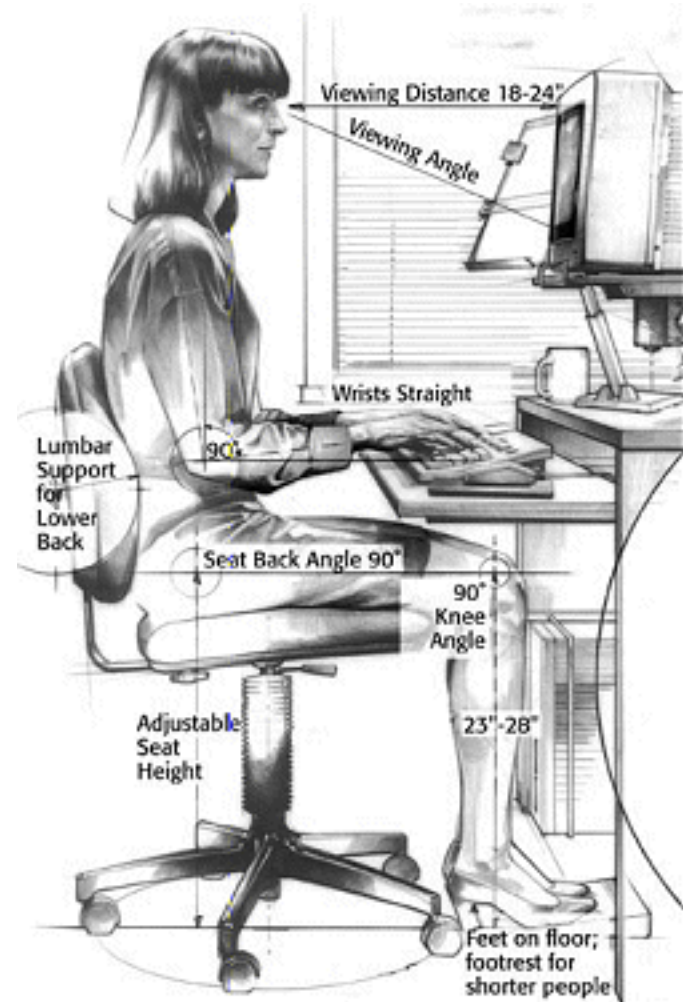
- Operate any equipment unless authorized.
- Misuse safety or other equipment
- Put yourself or others at risk
- Disassemble/Assemble desks or other office furniture. (Including removal of glass panels)





Display screen equipment

- You can request a DSE assessment at any time
- Chairs and desks should be used in the correct way - under no circumstances should you stand on or misuse either
- If you are in any pain or experience discomfort at work, please contact HR





Stress

- A little bit of stress is healthy
- If you think you're experiencing unhealthy stress, please let HR know immediately
- HR will help you identify the causes and help you manage it through our stress assessment





Stress Symptoms

Here are some signs to look out for:

- Memory problems
- Lack of concentration
- Short tempered
- Changes in sleep patterns
- Increased emotional responses
- Changes in eating habits
- Using alcohol, cigarettes or drugs to relax





Slips, trips, bangs and falls

- Any accidents on site must be recorded in the Accident Book
- The Accident books are kept in the kitchen of each suite (with the first aid kits) and in the Warehouse Manager's office, please follow the: Accident and Incident Reporting Procedure
- First aid kits are kept in the kitchen area of each suite
- In the event of an accident please ask a manager to contact a first aider
- A list of first aiders can be found here





Heavy lifting

- Moving heavy objects incorrectly can cause injuries
- You should not attempt to lift, pull or push anything without being trained by the warehouse manager





Electrical equipment

- All electrical equipment must be tested before it is plugged in
- You cannot plug in any of your own electrical equipment unless IT has approved it
- Our electrical equipment is tested annually, and should have a safety sticker on the plug

ELECTRICAL SAFETY TEST	
FAILED	
APPLIANCE ID	BY
FAILED DATE	

ELECTRICAL SAFETY TEST	
PASSED	
APPLIANCE ID	BY
PASSED DATE	NEXT TEST DUE



Smoking

- You are not permitted to smoke in any of our premises
- If you want to smoke on your break, please do so outside and away from the building entrance



Eyesight test

- As a computer user, you are entitled to a free eyesight tests and a contribution towards glasses if they're needed for VDU purposes
- Staff wishing to arrange an eyesight test should book an appointment at any branch of Specsavers, then ask HR for a voucher.





Environmental and Recycling Policy

- Flashbay is committed to protecting the environment, reducing waste, reusing products, recycling as much as possible and operating in a sustainable manner.
- Please ensure you follow our recycling guidelines. Above each bin, you will find an overview of what items should be placed in them:

Recycling

Rinsed glass bottles & jars
Plastic bottles
Paper & card (not paper towel)
Food & drinks Cans
Paper food & drinks cartons

Waste

Paper towels & tissue
Foil & metal
Non-recyclable plastic
Uneaten food



Welfare and Environment Representatives

- The Welfare and Environment Committee meet to discuss all things Health and Safety
- If you have any non-urgent items you'd like raised, please contact a representative:

Main Office:
Nikoletta Porgye

Warehouse:
Anastasija Goreva